



**Paradigm Imaging Group**

www.SCANTopia.com / 888.221.7226 / from Canada 714.432.7226

**CS500/CS600 Series Scanners**

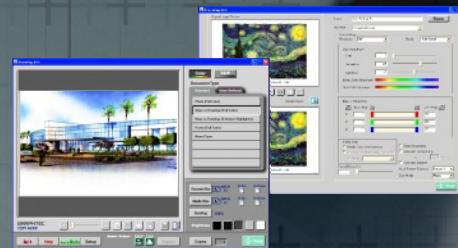
**3** Year On-Site Warranty *The Best Warranty In The Industry!*

**Color & monochrome solutions for large-format scanning and copying—featuring the world’s fastest scanning speeds and unbeatable accuracy.**

- 42 in. wide STANDARD and upgraded PRO models available in each series
- 0.1% scanning accuracy
- CIS Contact Image Sensor method for quick start-up, crisp image reproduction & minimal maintenance
- Max. scanning speed of 9 in./sec. (monochrome) & 3 in./sec. (color) at 400dpi *PRO*
- “Hands free” intelligent Thickness Adjustment: accepts up to 0.8 in. thick originals *CS600*
- Standard Scanning Master 21 + Software: Scan-to-File, Scan-to-Print, Scan-to-Email, or Scan-to-PDF
- 600dpi optical resolution up to 4800dpi interpolated resolution *PRO*
- sRGB compatible
- USB2.0 & Ethernet plug ‘n’ play connectivity

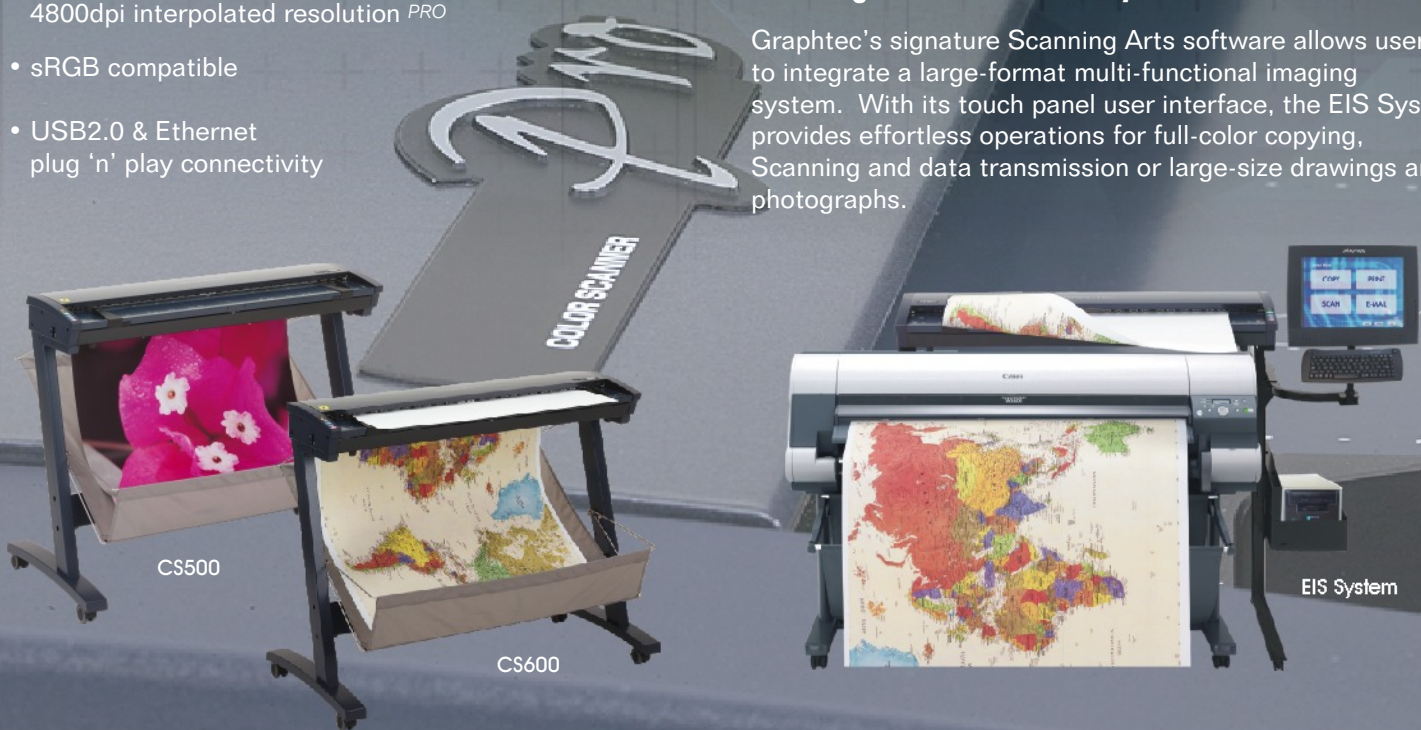
**Standard Scanning Master 21 + Driver Software**

Scanning Master 21 + Software enables all IS & CS series scanners to perform Scan-to-File, Scan-to-Print, Scan-to-Email, or Scan-to-PDF document management tasks. It also allows users to integrate a large-format copying system by combining their scanner with a large-format printer.



**Scanning Arts Software EIS System**

Graphtec’s signature Scanning Arts software allows users to integrate a large-format multi-functional imaging system. With its touch panel user interface, the EIS System provides effortless operations for full-color copying, Scanning and data transmission or large-size drawings and photographs.



*Experience the Graphtec Advantage!*

# CS500/CS600 Series Scanners Specifications

	CS600		CS500	
		PRO		PRO
Document sizes	ARCH E to ISO A4 (max. width: 43.3"; min. width 8.3')			
Effective scanning area	Width: 42" centered (max. width: 42.9"; max. length: 52.5") *1			
Document thickness	0.8" or less (including carrier sheet)		0.06" or less (including carrier sheet)	
Document thickness detection process	Automatic detection by ITA		-	
Optical resolution	600 dpi			
Interpolated resolution	50 to 800 dpi, in 1-dpi increments	50 to 4800 dpi, in 1-dpi increments	50 to 800 dpi, in 1-dpi increments	50 to 4800 dpi, in 1-dpi increments
Main system	Contact image sensor system			
Sub scanning system	Document travel (sheet through) system			
Max. scanning speed at 400dpi:*2	4.5"/sec. 1.5"/sec.	9.0"/sec. 3.0"/sec.	4.5"/sec. 1.5"/sec.	9.0"/sec. 3.0"/sec.
Scanning precision*3	0.1%, ±5 pixels / 42"			
Color modes	Monochrome: Bi-level, halftone grayscale simulation; Grayscale: 8-bit (256 level) Color: 8-bit, 24-bit			
Threshold value	DSP (Digital Signal Processor) - controlled automatic setting for monochrome scans			
Color space	sRGB Compatible			
Light source	LED (RGB)			
Interface*4	USB 2.0 and Ethernet			
Output	Image Data			
Rated power supply	100 to 120/200 to 230 VAC ± 10%, 50/60 Hz			
Operating environment	Temperature: 50° F to 95° F; Humidity: 35% to 80% RH (non-condensing)			
Power Consumption	135 VA or less			
External dimensions (approx.)	47.4"x37.7"x25.6" including stand (W x H x D)			
Conforming standard	UL, FCC class A (USA), CE mark (EU)			
Operating system (OS)	Windows® XP Professional®, Windows XP Home Edition®, Windows 2000 Professional®			
Weight (approx.)	88.2 lbs. (including stand)			

\*1 Documents up to approximately 52.5 ft. in length (driver software limitation) can be scanned. However, the actual document length that can be scanned is limited by the available memory (hard disk or other data storage device) of the computer to which the scanner is connected and also by the grade of the medium being scanned.

\*2 Excludes data transfer time. Average scan time varies depending on the document sizes, grade of interface cable and computer configurations.

\*3 Notes on scanning precision:

Scanning precision may vary depending on the grade and thickness of the medium being scanned, as well as the operating conditions. The precision figures above were measured under the operating conditions described below:

Test media used - Mylar sheet #200

Ambient conditions - Temperature 68° F ± 3°; humidity: 60% ± 10% RH

\*4 The USB 2.0 and Ethernet interfaces cannot be used at the same time

Brand names and product names listed in this brochure are the trademarks or registered trademarks of their respective owners. Specifications are subject to change without notice.

## GRAPHTEC

Paradigm Imaging Group - Your Ultimate Source For Large Format Scanning & Printing Solutions!